

UNITED

Forklift and
Access Solutions



ATHENA

850

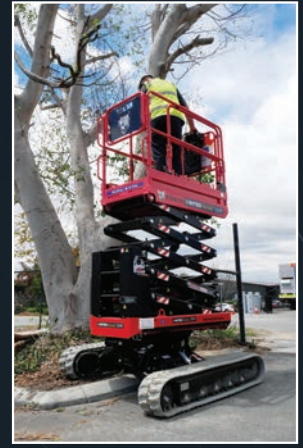
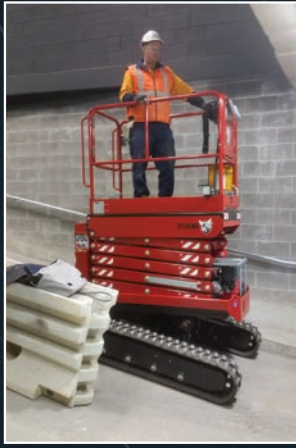
BL, EVO, BI-ENERGY



**TAKES ON CHALLENGING TERRAIN
LIKE NO OTHER SCISSOR LIFT
ON THE MARKET**



UNITED It's all about you



	Athena 850 BL	Athena 850 EVO	Athena 850 Bi-Energy
Basket capacity	250 kg (2 op.)	250 kg (2 op.)	250 kg (2 op.)
Max working height	7.9 m	7.9 m	7.9 m
Max height basket floor	5.9 m	5.9 m	5.9 m
Moving height	6.1 m	6.1 m	6.1 m
Lateral levelling for moving at heights	+ / - 4°	Dynamic Drive System	Dynamic Drive System
Powered Standard	Diesel Hatz 1B40	Diesel Kubota Z482	Lithium-Ion Power Pack / Diesel Hatz 1B40
Accelerator	Automatic	Automatic	-
Undercarriage	Bi-Levelling	Bi-Levelling	Bi-Levelling
Basket levelling	Automatic	Automatic	Automatic
Longitudinal levelling front	+/- 16°	+/- 16°	+/- 16°
Longitudinal levelling rear	+/- 20°	+/- 20°	+/- 20°
Lateral levelling	+/- 15°	+/- 15°	+/- 15°
Power generator (option)	220V-1kW	220V-1kW	-
Electric motor (option)	220V-2kW	220V-2kW	-
Hydraulic commands	Proportionals	Proportionals	Proportionals
Direction-control system	Yes	Yes	Yes
Easy-drive system	Yes	Yes	Yes
Dynamic Levelling System	-	Yes	Yes
Pro-Active Levelling System	-	Yes	Yes
Kit for high speed	Max 2.20 km/h	Max 2.20 km/h	Max 1.80 km/h
Ground emergency	Yes	Yes	Yes
Control of inclination	Automatic	Automatic	Automatic
Gradeability	25°	25°	25°
Side slope	21°	21°	21°
Length	1.94 m	2.11 m	2.11 m
Width	1.30 ÷ 1.50 m	1.30 ÷ 1.50 m	1.30 ÷ 1.50 m
Minimum machine height with folded railings	1.98 m	1.98 m	1.98 m
Total weight	1990 kg	2460 kg	2460 kg
Compliance	EN 280, ANSI, CSA, ASNZS1418	EN 280, ANSI, CSA, ASNZS1418	EN 280, ANSI, CSA, ASNZS1418

WE'RE UNITED BEHIND YOUR BUSINESS



T: 131 607

unitedequipment.com.au

SALES | RENTALS | SERVICE | PARTS | FINANCE | TRAINING

WE BRING MORE OF THE WORLD'S BEST TO YOU



KONECRANES

Haulotte

ALMACRAWLER



WA

Perth
Bunbury

NT

Darwin

SA

Adelaide

QLD

Brisbane
Mackay
Rockhampton

NSW

Sydney

VIC

Melbourne
Ballarat

TAS

Burnie