

UNITED

Forklift and
Access Solutions



T-SERIES

Walkie Reach Stackers

1.5 Tonne



UNITED It's all about you

NSX15EA Walkie Reach Stacker

The NSX15EA walkie reach stacker is the all-rounder machine for any warehouse. The scissor reach arms makes them the effective solution to handle all types of stacking and loading of pallets up to 5.5 metres high*.

Built on an innovative AC drive motor, these stacker's deliver strong power with a top travel speed of 6km/h, while ensuring excellent maneuverability and accurate control in the tightest work spaces.



Features

Robust Scissor Reach Design

Double reach stacking with cushioning to reduce shocks upon extending and retracting fork movements.

Auto Speed Reduction

Safety feature that automatically reduces the speed once the stacker exceeds the present lifting height.

Automatic Lift Lock

Ensures the mast maintains its original lift position even when there is a sudden disconnection of power supply.

Safe Hydraulic System

A safety design that prevents the mast from dropping abruptly due to a sudden loss of hydraulic pressure or leaks.

Automatic Lift Cut Off

Lift function is stopped when the battery power is less than 20%.

Anti-Roll Back

System that keeps the stacker steady on ramps and prevents it from rolling backward.

Enhanced Heat Dissipating Design

Suited to long operation by protecting components from overheating.

Maintenance Free Motors

Robust and maintenance free AC traction motor allows for smooth travel transition from point to point.

Advance Steering & Controls

Power steering enhances handling while the integrated controls allow the operator to multi-task the lifting/lowering of the mast while traveling.

Optional:

Proportional Valve

Offers more precise control over lifting and lowering of the forks.

Top Load Battery Design

Allows the battery to be changed more efficiently and provides easy access to the battery refilling point.

Easy Charging

The 10Amp charger provides hassle-free charging so you're always ready for your next shift.

Battery Discharge Indicator

Displays useful info to the operator including operating hours, battery level and error codes.

Easy Maintenance

Quick access to internal key components for inspection, maintenance or replacement by loosening four securing bolts.

Optional: Platform

Foldable platform that helps reduce operator fatigue over long shifts by allowing the operator to move freely with the stacker.



Characteristics		NSX15EA
Drive unit		Battery
Operation type		Standing
Rated capacity (kg)	Q	1500
Load centre (mm)	c	600
Wheelbase (mm)	y	1395

Weights

Service weight (include battery) (kg)		1865
Axle loading fork advanced, unladen drive side / load side		1150/715
Axle loading fork retracted, unladen drive side / load side		1250/615
Axle loading fork advanced, laden drive side / load side		310/3055
Axle loading fork retracted, laden drive side / load side		1075/2290

Wheels / Tyres

Tyre type driving wheels / Loading wheels		PU/PU
Tyre size, driving wheels (diameter x width) (mm)		Ø260x105
Tyre size, loading wheels (diameter x width) (mm)		Ø102x73
Tyre size, caster wheels (diameter x width) (mm)		Ø100x73
Wheels, number driving / Loading (x=drive wheels)		1x+2/4
Track width, rear, loading side (mm)	b ₁₁	1000

Dimensions

Tilt of mast/fork carriage forward/backward (°)	a/β	2/4
Height - mast lowered (mm)	h ₁	2090
Free lift (mm)	h ₂	0
Lift height (mm)	h ₃	3000
Height - mast extended (mm)	h ₄	3960
Seat height / standing height (mm)	h ₇	150
Height of wheel arms (mm)	h ₈	135
Overall length (mm)	l ₁	2340
Length to face of forks (mm)	l ₂	1270
Overall width b (mm)	b ₁ /b ₂	850/1100
Fork dimensions (mm)	s/e/l	40/100/1070
Fork carriage class / type A, B (mm)		A
Fork carriage width (mm)	b ₃	800
Distance between fork arms (mm)	b ₅	200/780
Distance between wheel-arms / loading surfaces (mm)	b ₄	900
Reach distance	l ₄	590
Ground clearance, laden, below mast (mm)	m ₁	70
Minimum ground clearance of frame	m ₂	70
Aisle width for pallets 1000 x 1200 crossways (mm)	Ast	2695
Aisle width for pallets 800 x 1200 lengthways	Ast	2730
Turning radius	Wa	1690
Length across wheel arms (exclude fork) (mm)	l ₇	1820

Performance

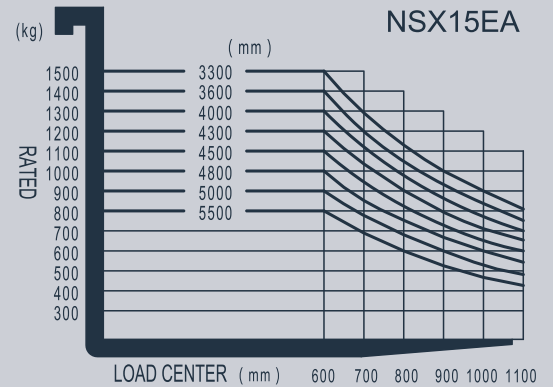
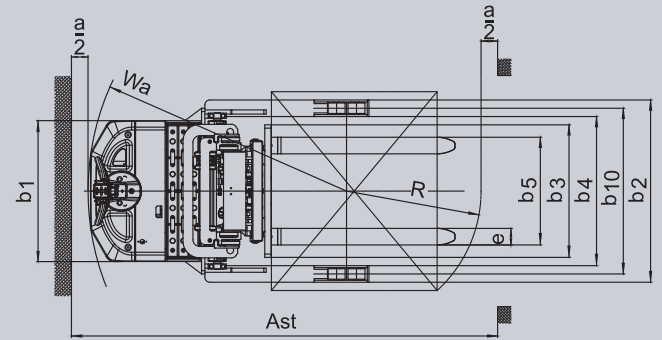
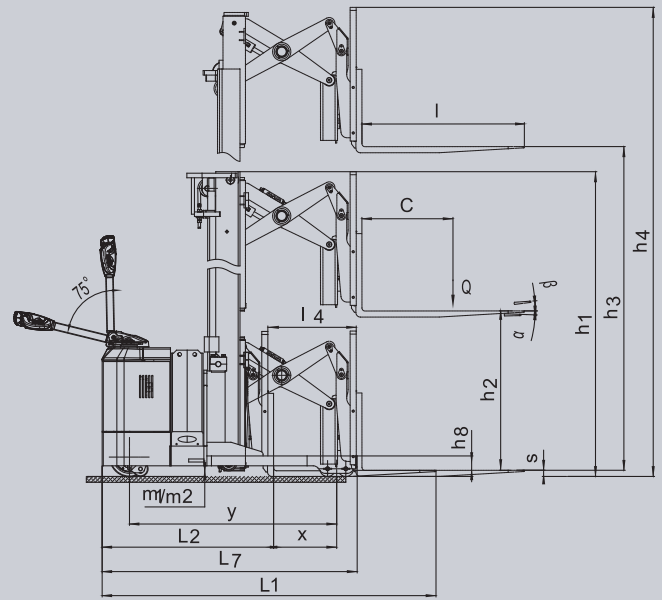
Travel speed, laden/unladen (km/h)		5.5/6
Lifting speed, laden/unladen (m/s)		0.11/0.14
Lowering speed, laden/unladen (m/s)		0.24/0.24
Reaching speed, laden/unladen (m/s)		0.12/0.12
Max. gradeability, laden/unladen (m/s)		6/10
Service brake		Electromagnetic

Drive

Drive motor rating S2 60 min (kW)		3.3
Lift motor rating at S3 15% (kW)		3
Maximum allowed size battery		815x208x630
Battery voltage/ nominal capacity K5 (V/Ah)		24/280
Battery weight (kg)		230

Additional Data

Type of drive control		AC
Steering type		Electronic
Sound pressure level at the drivers ear (dB)		74



Options
Various wide base legs opening 36"/42"/48" options to suit wide pallet handling.
Cold Room Package Allows operation in -20° temperature cold rooms.
High Capacity 280/360Ah Battery
Integral side shifter
*Higher Lift Heights Capability to increase lift heights to meet special requirements.

Mast Type	Lift Height h ₃	Lowered mast height h ₁ (mm)	Free lift h ₂ (mm)	Extended mast height h ₄ (mm)
2 Stage	2700	1940	0	3660
	3000	2090	0	3960
	3300	2240	0	4260
	3600	2390	0	4560
	4000	2590	0	4960
3 Stage	4300	2760	0	5260
	4000	1960	1000	4955
	4500	2130	1170	5455
	4800	2230	1270	5760
	5000	2295	1335	5960
	5500	2460	1500	6460

WE'RE UNITED BEHIND YOUR BUSINESS



T: 131 607

unitedequipment.com.au

SALES | RENTALS | SERVICE | PARTS | FINANCE | TRAINING

WE BRING MORE OF THE WORLD'S BEST TO YOU



KONECRANES

Haulotte

ALMACRAWLER



WA

Perth
Bunbury

NT

Darwin

SA

Adelaide

QLD

Brisbane
Mackay
Rockhampton

NSW

Sydney

VIC

Melbourne
Ballarat

TAS

Burnie